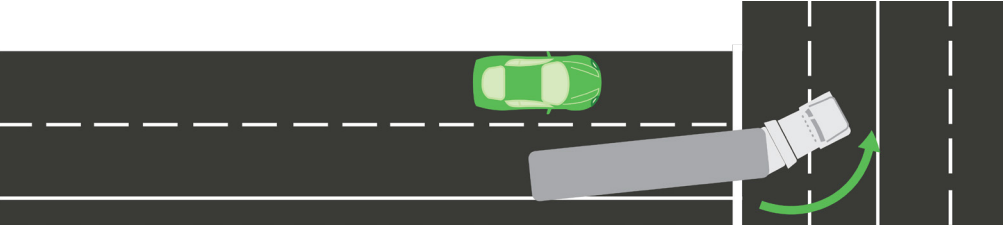


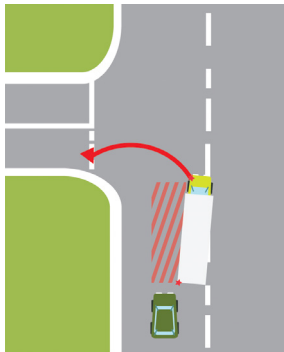
Do Not Overtake a Turning Vehicle

Why shouldn't you overtake a turning vehicle?

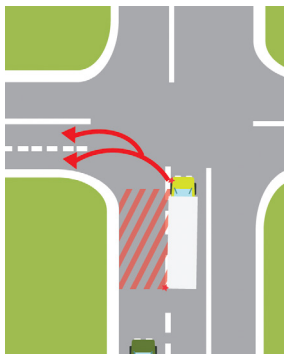
Trucks or vehicles **over 7.5 metres long** displaying a 'Do Not Overtake Turning Vehicle' sign are **allowed to use more than one lane to turn**. You are not allowed to overtake these vehicles while they are turning as you may enter the path of their load, or enter their blind spot.



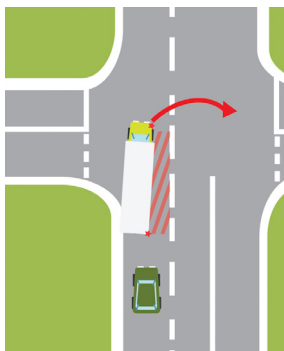
The No-Go Zone while a truck is turning



If you are on the truck's left - which is one of the driver's blind spots - it may need to turn left across your path, without the driver being aware that you are there.



You must not overtake on the right of a vehicle that is turning right, or making a U-turn from the centre of the road, and is signalling to turn right.



You should stay behind a truck in a roundabout because it may need the entire road width to turn.

Statistics

In 2013 in Melbourne **2.1%** of all vehicle occupant fatalities occurred in an overtaking/manoeuvring situation.



Approximately **60%** of persons killed in heavy truck crashes are light vehicle occupants.



9/10 fatal or injury truck crashes involve passenger cars.

