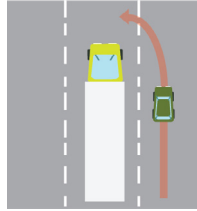


Don't Cut in Front of Trucks

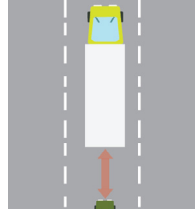
Tips for sharing the road with trucks



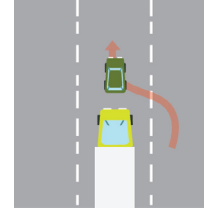
1. Avoid blind spots
(see our quick fact on "if you can't see my mirrors I can't see you")



2. Pass trucks with caution
on the right hand side of a two lane road when safe to do so



3. Do not linger
near a truck - following distance should be at least 4 seconds



4. Do not cut in front
of trucks - trucks need a greater distance to stop than cars and will slow down well before traffic lights to avoid a complete stop

Crash statistics



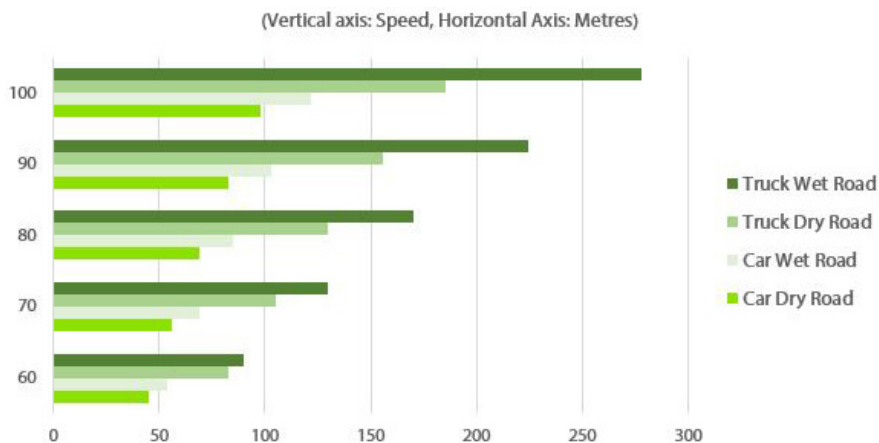
80% of fatal multiple vehicle crashes involving trucks are **NOT** caused by the truck



56% of fatalities in crashes involving trucks are the occupant of the light vehicle

Truck stopping distances

Trucks are bigger and heavier than cars so they take longer to stop safely, as can be seen from the graph (the bigger the truck, the more stopping distance it needs).



Trucks can take up to
40%
longer to stop than cars

