

Avoiding Animal Collisions

Introduction

Each year, thousands of collisions occur between vehicles and animals. Although bigger animals tend to cause more damage, smaller ones are still quite dangerous.

The Facts

10 million

Animals are estimated to have died on Australian roads every year.

The cost of road trauma as a result of animal collisions per year is approximately

\$7 billion

Vehicle Crash Statistics Involving Animals

Victoria



9,225 native animals

were hit by a vehicle from 2021–2022, reported by Wildlife Victoria

Over the last 5 years animal collisions

↑ increased by 53%

New South Wales



In 2021 almost 1/3

of animal-related accidents across the country took place on NSW roads

153 casualty crashes

when swerving to avoid an animal occurred in NSW in 2021



926 crashes

from 2015–2020 involved animals and resulted in injury to humans

Strategies to avoid hitting an animal

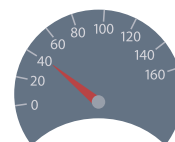
Look far ahead to scan the sides of the road for animal activity and watering points.



Be extra careful driving in winter, there is a 15% increase in animal collisions between May and August.

↑ 15%
May – August

Stay within the speed limit and drive to the conditions.



Be extra vigilant at dawn and dusk, because this is when animals are most active.



When possible avoid driving at dawn and dusk, especially if driving into the sun.



Don't use cruise control as this slows reaction time.



What to do if an Animal Collision is Unavoidable

1. Remain in your lane, as swerving can cause a more serious crash
2. Apply the brakes firmly
3. Release the breaks just before impact, this will help prevent your vehicle's nose from "scooping" the animal up and over the hood.

