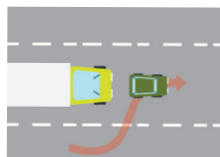
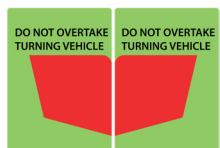


Interactions between Heavy Vehicles and Light Vehicles

Tips for light vehicles and heavy vehicles to share the road



Give trucks the room they need — they take longer to stop than cars



Obey the “do not overtake turning vehicle” signs



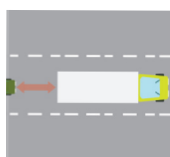
Use your headlights — but avoid high beam glare



If you can't see a truck driver's mirrors, they can't see you



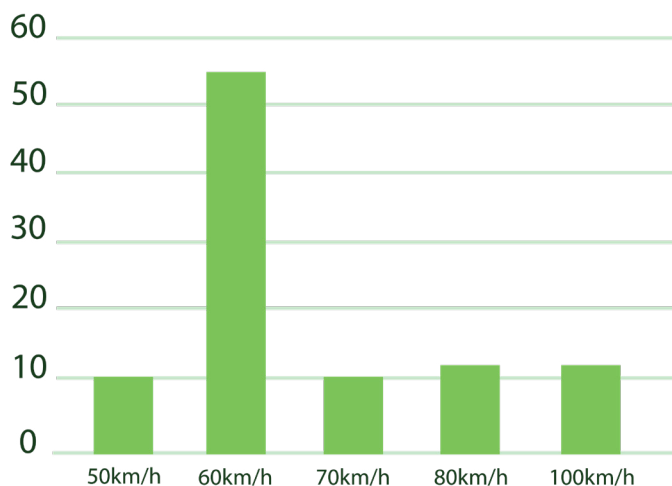
Keep left on freeways unless overtaking



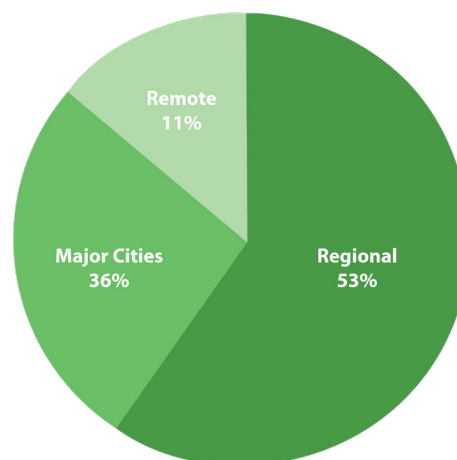
Leave a safe gap when following

Speed zones where crashes involving heavy vehicles are most likely to occur

Percentage of heavy vehicle crashes per speed zone



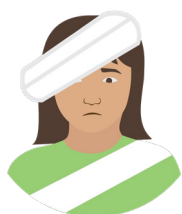
Heavy vehicle and light vehicle crashes are most common in regional areas



Number of road fatalities involving heavy vehicles



- In 2017, heavy vehicles accounted for about **3.8% of all registered vehicles** in Australia, but were involved in **13.7% of all fatal crashes**.



- In 2017 there were **196 lives lost**, and hundreds more people seriously injured as a result of heavy vehicles involvement in crashes.



- In 2017 NTI found that **heavy vehicles are not at fault in 93%** of heavy vehicle and light vehicle crashes involving fatalities.



- From 2008-2012, there were 81 fatal crashes involving heavy vehicles, **86% involved light vehicles, pedestrians or cyclists**. Heavy vehicles were deemed to be responsible for only 24%.