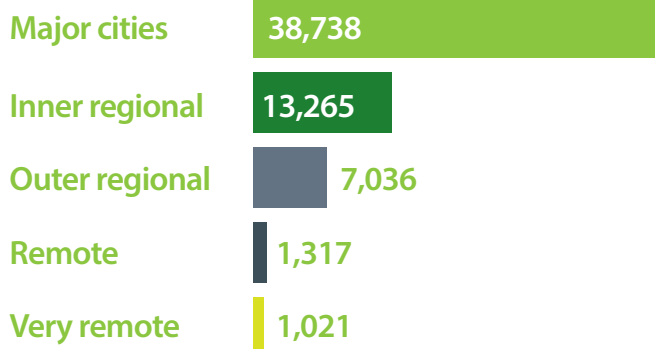


Hospitalisations and transport crashes – Part 2

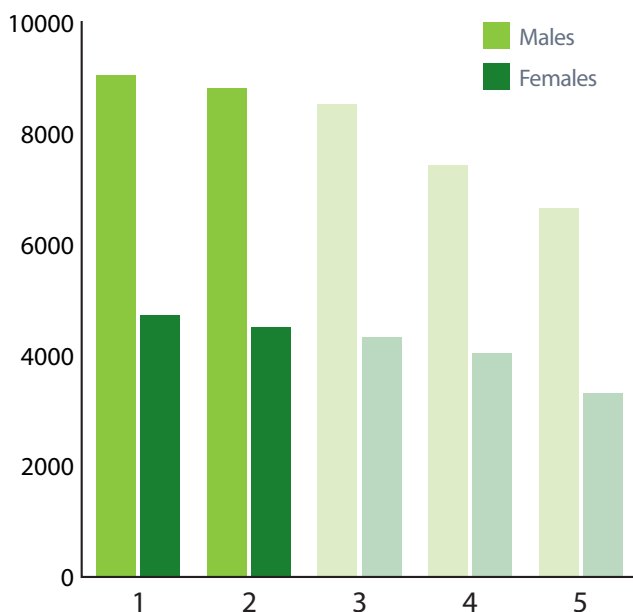
The issue

Young and economically disadvantaged people residing in remote areas have a higher involvement in transport crash injuries.

Usual residence of patients involved in transport crashes



Socio economic status and transport injury crashes

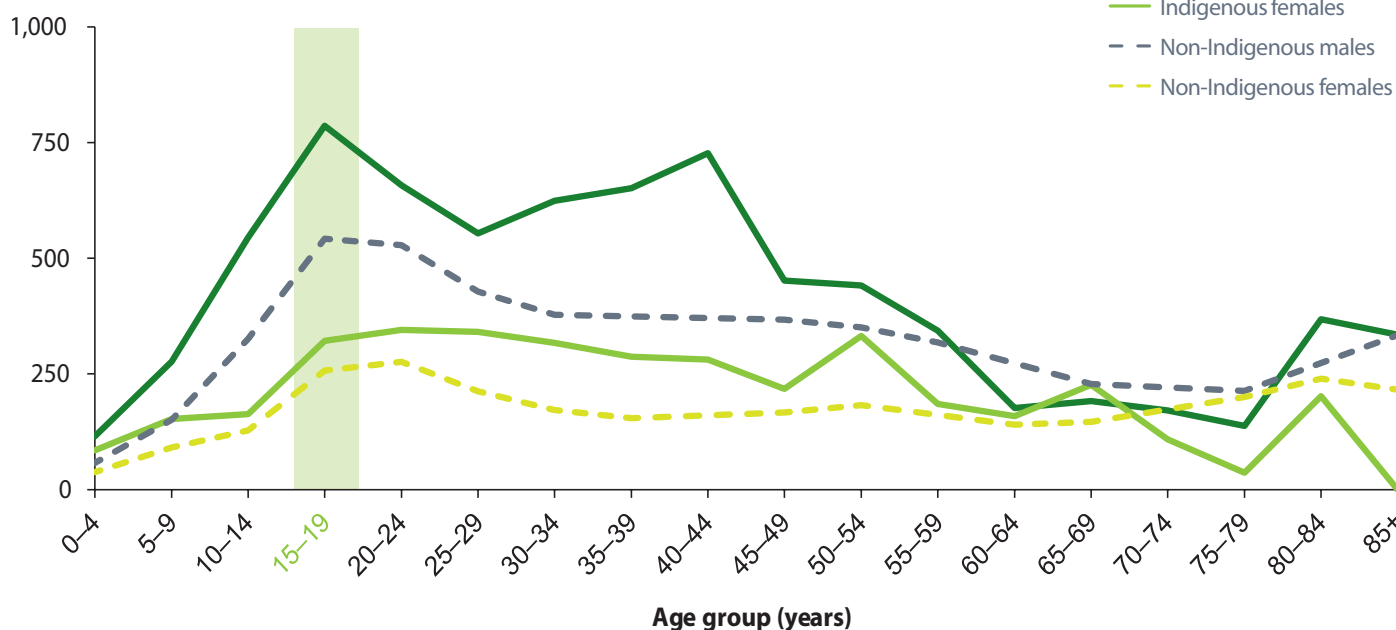


The highest numbers are seen in those who are most disadvantaged according to the SEIFA quintile.

Aboriginal and/or Torres Strait islanders and road risk

Males are most involved in transport crash injury cases across Indigenous and non-Indigenous Australians.

Cases per 100,000 population



The data are drawn from episode-based system. Refer to the full AIHW Report [Trends in hospitalised injury, Australia 2007-08 to 2016-17](#) for completeness.