

NRSP
NATIONAL ROAD SAFETY

**PARTNERSHIP
PROGRAM**

NRSP BULLETIN

Improving Road Safety is Simply Good Business

August 2020 Newsletter No. 71

For the most up-to-date news visit www.nrspp.org.au

Dear <<First Name>>,</p>
</div>
<div data-bbox="117 434 874 507" data-label="Text">
<p>Welcome to the latest newsletter from the National Road Safety Partnership Program (NRSP). NRSP is a government-supported, industry-led collaborative network which aims to support Australian businesses and organisations to develop a positive road safety culture and help protect their workers and the public, not only during work hours but also when staff are 'off-duty'.</p>
</div>
<div data-bbox="117 534 312 549" data-label="Text">
<p>This edition will cover:</p>
</div>
<div data-bbox="117 549 430 663" data-label="List-Group">

• [NRSP ACHIEVEMENTS](#)
• [NRSP NEWS](#)
• [NRSP MONTHLY FOCUS](#)
• [NRSP #THROWBACKTHURSDAYS](#)
• [NRSP #DIDYOUKNOW?](#)
• [NRSP RESOURCES](#)
• [EVENTS](#)
• [USEFUL WEBPAGES](#)

</div>
<div data-bbox="141 707 464 729" data-label="Section-Header">
<h2>NRSP Achievements</h2>
</div>
<div data-bbox="146 783 877 960" data-label="List-Group">

• Changes at NRSP with our Swinburne University Communications and Design star interns, [Gabrielle Fetalvero](#) returns to university and [Caitlin Xavier](#) joins the team.
• Empowr Mobility conducted a use case workshop to explore attitudes of aspiring young people suffering transport towards safe vehicles and ability to actually access them.
• [Uniting Care Queensland's Road Safety Journey: Lessons, Challenges and Innovations](#) scheduled for 26 August and on 17 September, a webinar to explore transport risk displacement.
• NRSP finalises Quick Facts: Hospitalisations and Transport Crashes – [Part 1](#) and [Part 2](#)

</div>
<div data-bbox="39 968 507 981" data-label="Page-Footer">
<p><https://us16.campaign-archive.com/?u=1e831c47afe683dac8197f108&id=f2894caaad></p>
</div>
<div data-bbox="925 968 957 980" data-label="Page-Footer">
<p>1/10</p>
</div>

NRSP News



Fatigued Driving – Australian Automobile Association (AAA) Current Research

The NRSP is proud to announce that with its new home at the Monash University Accident Research Centre (MUARC) it has been successful in securing a AAA Fatigue Research Trial focused on fatigue management in the workplace. The collaborative project also includes NRSP Program Partner Tip Top Bakeries who has one of the most diverse and complex fatigue management workplaces.

[Read More...](#)



Creative Change Within NRSP, Sad Farewell And Joyful Welcome

Over the last 12 months NRSP had the pleasure of hosting Swinburne Communications and Design 3rd year student [Gabrielle Fetalvero](#). Sadly, that came to an end on Wednesday 5 August as she returns to complete her final year of studies. Now with Gabrielle's exit, NRSP warmly welcomes [Caitlin Xavier](#) as the replacement 2020/21 intern.

[Read More...](#)



There Have Been 125 Deaths On Victorian Roads Despite Traffic Being Reduced By Lockdowns

Drivers are being urged to take responsibility for road safety as fatalities continue to rise in Victoria despite there being fewer cars on the road as a result of lockdown. Complacency is being blamed for Victoria's road toll surging despite fewer cars on the road. Three people died overnight on Friday alone, with the causes under investigation.

[Read More...](#)

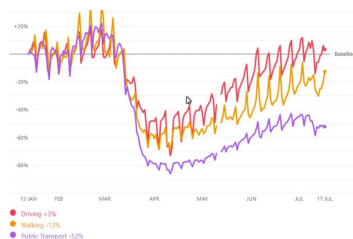


QLD Cairns Police – Mobile Phone Camera Trial Hits Far North Roads

Mobile phone detection cameras will roll out on Cairns roads from this week – and there is bad news for anyone who thinks they can scam the system. The Queensland-

wide trial will send cameras into the field across the state to capture anyone driving while using a phone or without a seatbelt.

[Read More...](#)

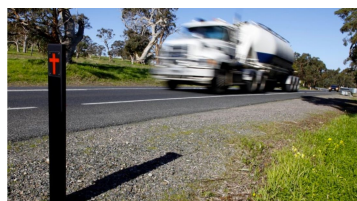


Cars Rule As Coronavirus Shakes Up Travel Trends In Our Cities

As with other parts of the global economy, COVID-19 has led to rapid changes in transport trends. The chart below shows overall trends for driving, walking and public transport for Australia as of July 17.

Unfortunately, the current lockdown of metropolitan Melbourne, which is at odds with trends in Australia's other biggest cities, is skewing the national average.

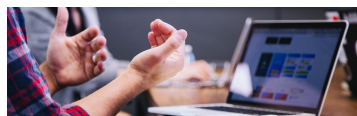
[Read More...](#)



Australia's Road Toll Is Falling In Every State Except One

The latest Australian road toll shows the number of road-related deaths per month is declining in all states except Queensland, but the national total is still tracking almost 11 per cent behind the nine-year road safety target for the end of 2020. According to June 2020 statistics released by the Bureau of Infrastructure, Transport and Regional Economics (BITRE), there were 78 deaths on Australia's roads last month – a reduction on the five-year average for June of 98 deaths.

[Read More...](#)



Participants Wanted For Leadership And Safety Climate Survey

Participants are wanted for a survey on Leadership and Safety, the findings of which will form part of an Honours thesis. It takes around 10 minutes to complete and is confidential and anonymous. The aim of this research is to look at the influence leadership has on the safety climate in an organisation, specifically, which leadership style creates the most positive safety climate.

[Read More...](#)



Stats Reveal Northern Territory Motorists' Poor Driving Skills

Paramedics have urged Territorians to buckle up and be sensible after the latest figures reveal they are the most likely in the country to drive drunk and not wear a

seatbelt.

The Productivity Commission report found 8.5 per cent of respondents indicated they had not worn a seat belt while driving in the previous six months of being asked. The figure has increased by 1.2 per cent from 7.3 per cent in the financial year 2017-2018.

[Read More...](#)



Govt Agency Endorses 'Engage And Educate' Approach

Transport for NSW is taking steps to more closely collaborate with the heavy vehicle industry in a bid to foster significant safety benefits for the industry and other road users. Transport for NSW Executive Director Insights and Engagement, Peta Gamon, said the 'Engage and Educate' approach used to raise awareness of safety issues around Chain of Responsibility was helping to increase safety in the freight sector.

[Read More...](#)

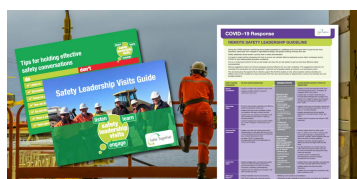


Manly has introduced 30km/h speed zones from Manly Wharf in the south, through the town centre, along the beachfront and up to the Queenscliff Bridge to protect pedestrians. JAMES BUCKWOOD

Manly Cuts Speeds To 30km/H To Become NSW's Slowest Suburb

Manly is now home to NSW's first 30km/h town centre, with the Northern Beaches Council slowing vehicles to protect visitors and locals who walk and cycle near the harbour and the beach. And in Sydney's south-west, speeds in the "highly walkable" town centre of Liverpool will drop to 30km/h to protect vulnerable road users.

[Read More...](#)



Leading The Way: Safety Leadership Tools

Safer Together has developed tools to help leaders promote visible safety leadership and effective safety conversations at site level. Staying informed is an essential part of developing a strong safety culture, so it's essential that company executive leaders make regular visits to worksites to talk informally with frontline personnel about the safety issues that relate directly to them.

[Read More...](#)

NRSP Monthly Focus



Vision is a must have for good driving. Driving not only relies upon vision but also cognitive and psychomotor skills. A key issue however, is these skills may be impaired as you get older but also may vary depending upon environmental conditions. People may be fine during the day but at night time their vision may be impaired. Another consideration is understanding where you are focusing or scanning as this is subconsciously where you will steer towards.

This month's focus is around vision in response to a query from a partner on the relationship of vision and driving.

NRSPP #ThrowbackThursdays

Laing O'Rourke outlines key lessons in adopting and implementing safety standards:



Be resolute



Start early



Leadership is essential



Look for opportunities for innovation

NRSP CASE STUDY: TOP OF THE CHAIN – LEADERSHIP IN SAFETY STANDARDS CASCADES FOR BENEFIT OF ALL

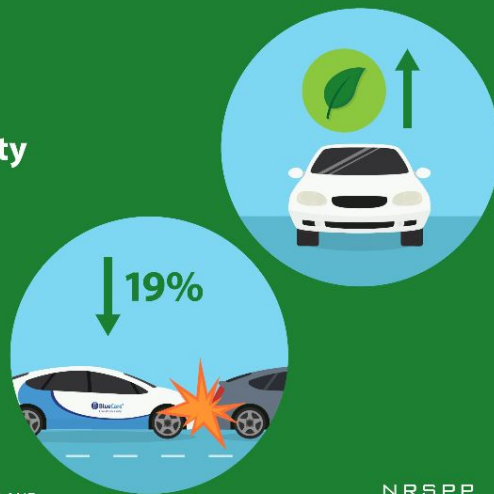
NRSP
NATIONAL ROAD SAFETY
PARTNERSHIP
PROGRAM

Over 3 years to the end of 2019, UnitingCare's sustained focused on road safety has generated many safety and bottom line benefits including:

- At fault crashes dropping by almost 19%
- Improved sustainability, with emissions reducing by more than 10% despite km travelled increasing

Join our FREE webinar on 26 August to explore this case study.

NRSP CASE STUDY: UNITINGCARE QUEENSLAND – SUSTAINED SAFETY FOCUS AND RISK MANAGEMENT REDUCES CRASHES, INSURANCE PREMIUMS AND FLEET COSTS



NRSP
NATIONAL ROAD SAFETY
PARTNERSHIP
PROGRAM

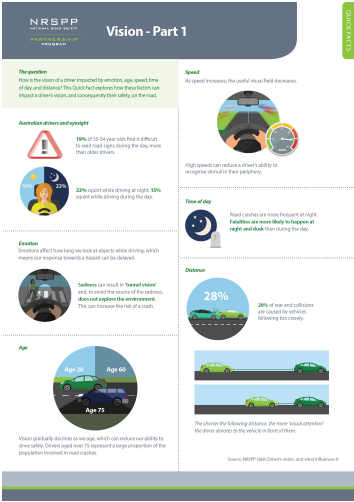
Keep the windscreen clean to reduce glare



NRSP #DidYouKnow?



NRSP Resources



NRSP Quick Fact: Vision – Part 1

How is the vision of a driver impacted by emotion, age, speed, time of day, and distance? This Quick Fact explores how these factors can impact a driver's vision, and consequently, their safety, on the road.

[Read More...](#)



NRSP Quick Fact: Vision – Part 2

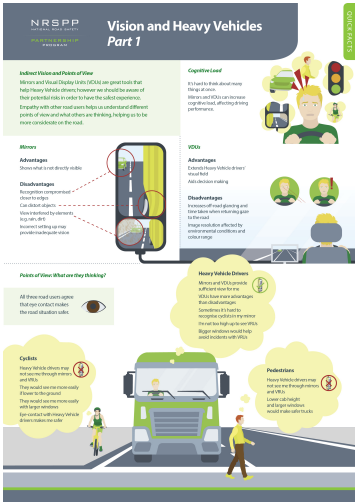
Our vision can be affected by a range of factors and in turn affect our safety while driving. It is important to know how our vision can be affected and how to minimise the risk.

[Read More...](#)

NRSP Quick Fact: Vision and Heavy Vehicles – Part 1

This Quick Fact details how mirrors and Visual Display Units (VDUs) are great tools for Heavy Vehicle drivers; however we should be aware of their potential risks to have the safest experience.

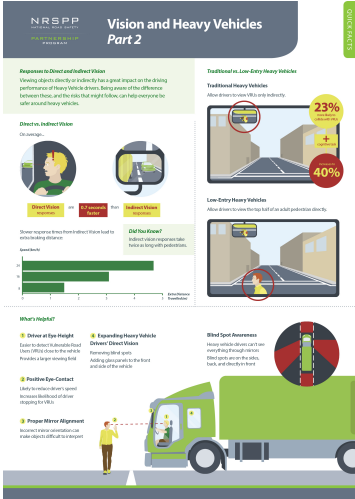
[Read More...](#)



NRSP Quick Fact: Vision and Heavy Vehicles – Part 2

Following on from Part 1, this resource explores how viewing objects directly or indirectly can have a great impact on the driving performance of Heavy Vehicle drivers.

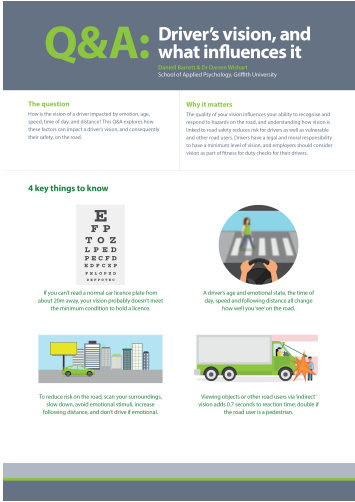
[Read More...](#)



NRSP Q&A: Vision – Driver’s vision, and what influences it

How is the vision of a driver impacted by emotion, age, speed, time of day, and distance? This Q&A explores how these factors can impact a driver’s vision, and consequently their safety, on the road.

[Read More...](#)



Exploring the Road Safety Benefits of Direct Vision

This project by Transport for London, Arup & the University of Leeds PAC Lab aims to provide empirical research to address a research-gap around understanding the potential benefits of seeing vulnerable road users directly as opposed to indirectly

(i.e. through mirrors). It deepens understanding of visual information processing in a driving context, and establishes how increased direct vision could reduce driver reaction times, the number of near misses, and collisions between HGVs and vulnerable road users.

[Read More...](#)



Vision & Driving

Driving is a complex task involving the integration of a range of visual, cognitive and psychomotor skills, many of which are impaired with increasing age. Given that driving is a highly visual task, it has been suggested that the high prevalence of visual impairment in older adults contributes to the decrement in driving performance and safety evident in some older drivers.

[Read More...](#)



Transport For London – Safer Trucks 360 View

Want to see a first-hand view as if you were a truck driver in a traditional verses direct vision heavy vehicle? This [interactive 360 view](#) does just that, it compares the difference, have an explore.

[Read More...](#)



NRSP Quick Fact: Driving Through Fog

This quick fact focuses on the tips for driving through fog. It highlights key facts and statistics.

[Read More...](#)

Events



UnitingCare Queensland's Road Safety Journey: Lessons, Challenges and Innovations

August 26, 2020

Making vehicle and road safety a central focus of fleet management has delivered major bottom line savings, particularly in insurance costs, and significant crash reductions for not-for-profit UnitingCare.

[Read More...](#)

Useful Webpages

- [Perception & Human Factors](#)
- [Direct vision for HGVs - research and tools](#)
- [Vision impairments](#)
- [Assessing Fitness to Drive - 10.2.1 Visual acuity](#)
- [Assessing Fitness to Drive - 10. Vision and eye disorders](#)
- [Eyesight standards](#)

NRSPP Program Funders



Copyright © 2020 National Road Safety Partnership Program, All rights reserved.

Want to change how you receive these emails?
You can [update your preferences](#) or [unsubscribe from this list](#).