



# NRSP

NATIONAL ROAD SAFETY

---

## PARTNERSHIP PROGRAM

How to clean and sanitise your vehicle to minimise  
the spread of COVID 19

# Today's moderator

Jerome Carslake

Principle Leader

NRSPP

Monash University Accident Research Centre (MUARC)

P: 0429 009 998

E: [Jerome.Carslake@monash.edu](mailto:Jerome.Carslake@monash.edu)



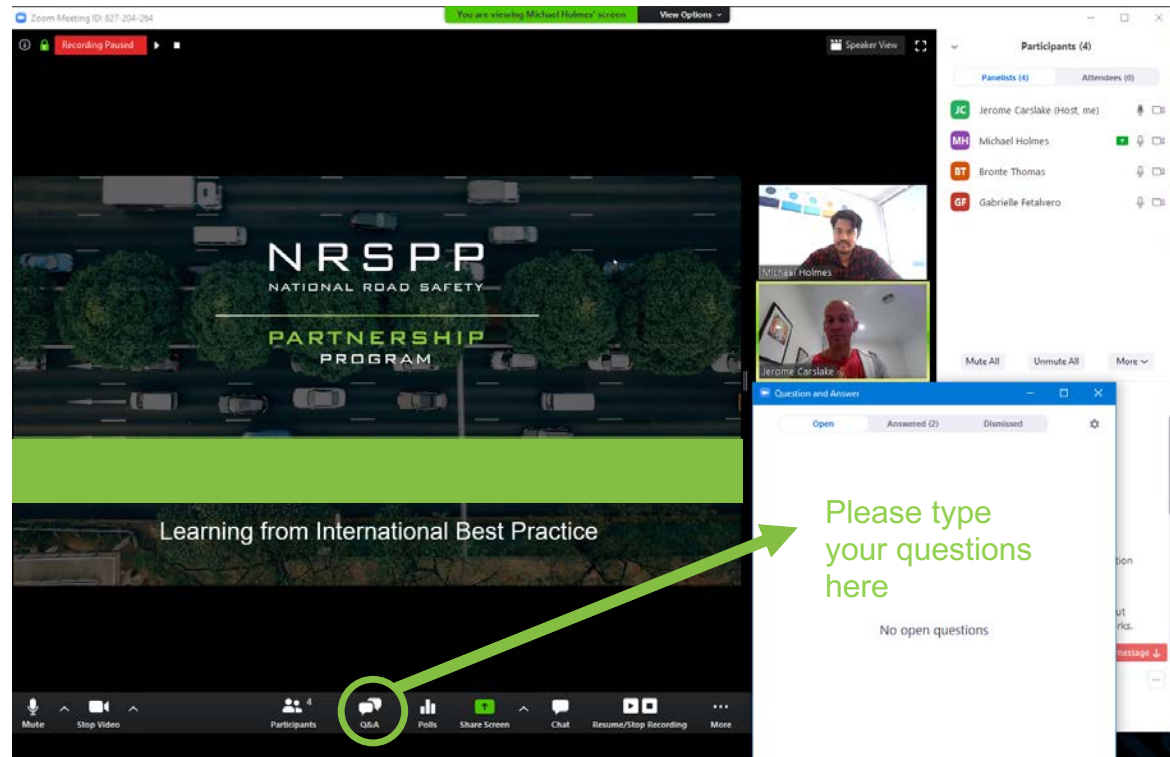
# Housekeeping



Webinar is = 40 mins  
Question time = 20  
mins



# Zoom Webinar Functions



# Today's presenter

Cameron Wearing

Director of Research and Development  
Australian Driving Institute

E: [cwearing@austrdrive.com](mailto:cwearing@austrdrive.com)





# How to Maintain your Vehicle

---





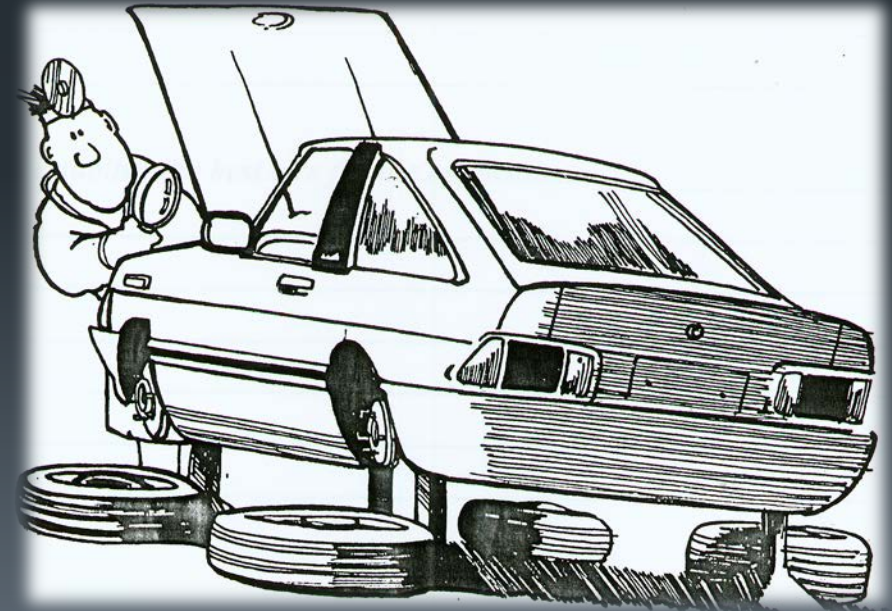
# About this Program

## COVID 19 (Corona Virus)

- Are your vehicles in Lock Down too?
- This 'sitting around' can cause damage/deterioration
- Just like a plane is happiest in the air... a car needs to be driven.



- Drivers are responsible for;
  - a clean safe and roadworthy condition,
  - report suspect or unsafe vehicle conditions, and
  - demonstrate safe driving practices to other road users.
- If you are a pool driver or custodian, the rules remain the same.
- The aim is to retain value of the vehicle as best as possible for 'end of lease'.





## About this Program



*How has your company's vehicle usage changed during this time?*



# Why should we maintain our vehicles?

## We rely on them

- To get us to our destination
- To get our job done

## Prevent unnecessary repairs

- Old/dirty oil can damage an engine and
  - Reduce performance/efficiency
- Rotate tyres to improve life

## Compliance

- All lights working?
- Registration in date (do you have an App?)





# Who is responsible?

## Who is responsible for vehicle checks?

- A designated person?
- Lease company?
- The fleet manager?
- Management?
- The service technician?
- The driver?

Australia ratified an agreement internationally with the Geneva Convention in 1968, 'The Driver is solely responsible....'





# Who is responsible?

## Answer:

*The driver is responsible for the vehicle once on the road and being driven.*

*The driver's employer is responsible to ensure they are providing a safe work environment.*

## Identifying service dates

## There are various ways to check service dates/kms

- Sticker on windscreen
- Vehicle maintenance logbook
- Vehicle check sheet / LeasePlan database

[illegible]

## What to look for:

- Getting low on tread?
- Need rotating or wheel aligning (service)
- Pressure (Check placard)
  - Pressure will deplete over time (2psi p/month)
  - Low pressure = Poor handling & fuel economy
- Sidewall damage
- Nails/Screws
- Bulges/ballooning
  - Can cause “blow outs”

Flat spots can occur from being stationary, don't worry.



## Life of Fuel:

- Fuel naturally degrades over time due too;
  - oxidation (exposure to oxygen) and
  - evaporation of its volatile compounds
- Unleaded in a sealed container (Fuel tank)
  - At up to 20 degrees will last up to 6 months
  - At up to 30 degrees will last up to 3 months
- Diesel can last from 6 to 12 months

## To prevent Fuel going off/stale:

- Make sure vehicles are driven weekly to mix the solution
- Keep tanks full (less oxygen)

*It is best practice to leave a shared vehicle full after use for the next driver?*





# Starting your vehicle – Ideal frequency

## During this time ADI recommends:

- Start and run vehicles weekly
  - Brief inspection vehicle (vs monthly check)
  - Drive to car wash
    - This will allow the battery to charge
    - Fluids will warm up and cycle
    - keep seals rubbery
    - Fuel will be mixed around
    - Cleans rust off brakes (Keeps them fresh)

*Do you need to fill in a log book?*



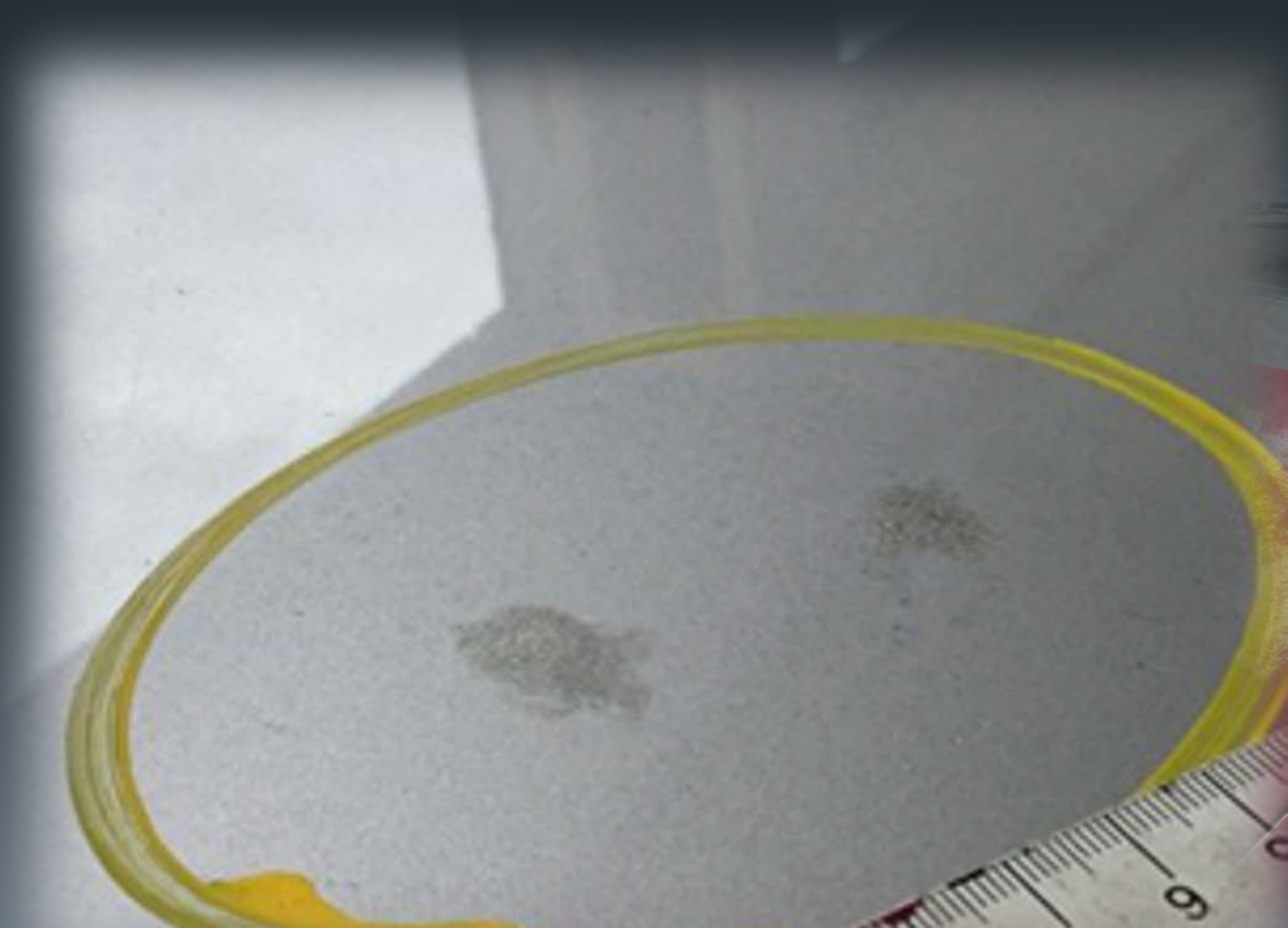
## Electric Vehicle Specifics

- EV's lose around 1-2% of battery charge each day without use
- Best practice, keep the battery charge between 20-80%
- Charging with normal 240v power is best for battery pack life (slow delivery)
- Keep vehicle in a cool, undercover spot as battery's deteriorate faster in hot temperatures



## Vehicles can deteriorate if not kept clean

- Paint
- Rust
- Interior odour
- Carpet/seat stains
- Tree sap/Sunlight damage if kept outside
- Bird droppings





# General vehicle cleanliness

## Tips:

- Wash once a week
- Keep undercover
- Keep interior free of loose items (Esp food!)
- Dust off dash/seats/controls/console etc
- Repair any damage asap





# General vehicle cleanliness

## Presentation

- Clean car = Good look
- Shows care and
  - Professionalism
  - Resale potential





P.O.W.E.R.S

**P.O.W.E.R.S is an acronym for vehicle checks  
that should be completed weekly**

## P. Petrol (Or diesel)

- Check how much fuel you have before travelling
- Make sure to fill up with the correct fuel
- Which side is the fuel filler on?





## P. Petrol (Or diesel)

*If you accidentally fill your vehicle with the wrong fuel, follow these simple steps to get back on the road as quickly as possible:*

- Don't panic
- Do not start the engine
- Call for assistance
  - **Wrong Fuel Rescue** on 1300 28 28 20 for example
- Let the fuel station staff know what's going on

## O. oil

- Check all '*Checkable*' fluids
- Top up if necessary, but don't overfill!
- Common Fluids to check:
  - Engine oil
  - Brake Fluid
  - Transmission oil (often sealed)
  - Power steering fluid (some electric)



## W. Water

- Water levels must be checked:
  - Check when cold
  - Radiator (Coolant)
  - Battery
  - Windscreen washer



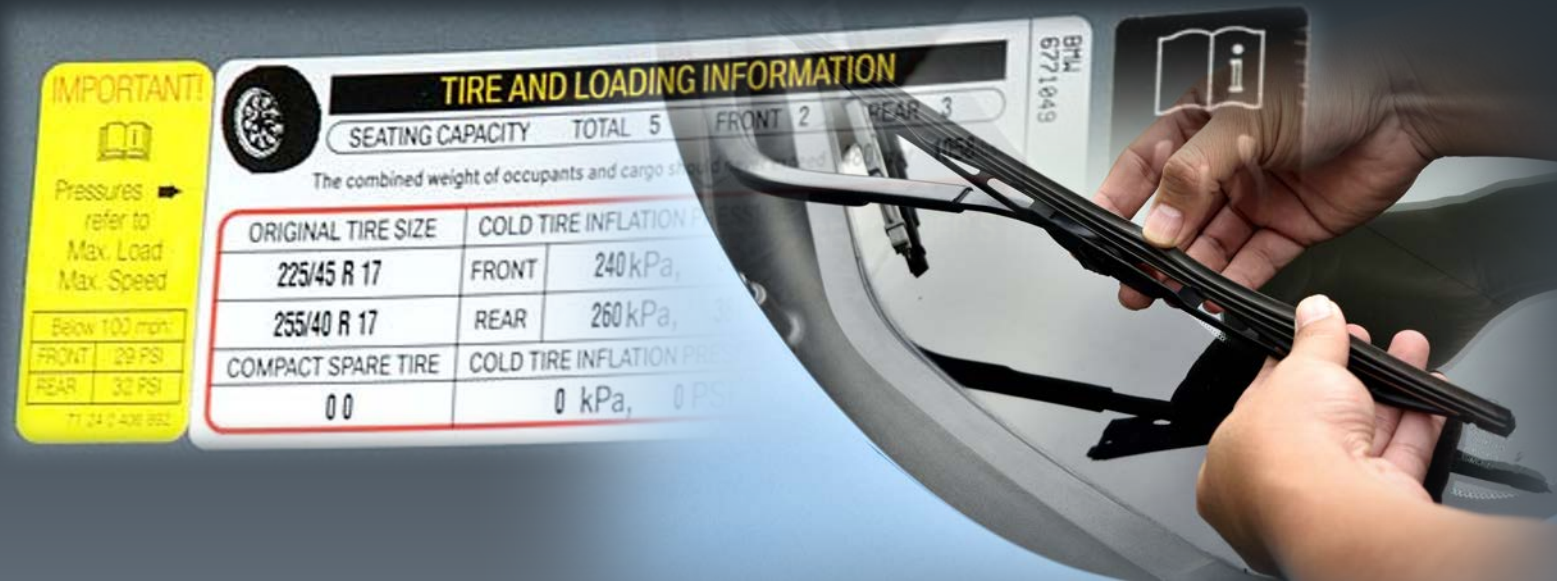
## E. Electrics

- Check lights are operational and clean:
  - Indicators
  - Head/Tail lights
  - Brake
  - Number plate
  - Reverse
  - Dashboard
- Battery
  - Secure
  - Terminal corrosion



## R. Rubber

- On average, tyres will last for around 50,000kms
- Pressures information on placard (B pillar)
- Windscreen wiper blades – replace winter/summer



## S. Safety

- Keep cabin free of loose items
- Make sure all loads are secure
- Seat belts





P.O.W.E.R.S



- Parked neatly, accurately and considering doors.
- Ideally undercover, at least off-street or in a driveway
- Away from:
  - Tree sap
  - Bird droppings
  - Potential hail damage
- Close all windows (Inc Sunroof)
- Remove keys, lock vehicle
- Ensure keys are stored in a secure place





Conclusion

*Thanks for your participation!*

Today we have learnt:

- ✓ Why vehicle maintenance is so important
- ✓ How to conduct a vehicle check
- ✓ How Covid 19 has affected these processes



*Please feel free to contact ADI if you have any further queries*



# How to Maintain your Vehicle

---



# Questions?



# Thank you for joining us today

For more information or to become a partner:

Follow us on social media



[@NRSPP](#)



[@NRSPPaus](#)



[LinkedIn](#)

Email

[Jerome.Carslake@monash.edu](mailto:Jerome.Carslake@monash.edu)



Register for newsletter

Visit [www.nrspp.org.au](http://www.nrspp.org.au)

